

CREATION OF A PUBLIC CONTAMINATED SITES BOREHOLE LOG DATABASE

Russell Prentice
Co-op Contaminated Sites Officer



Ministry of
Environment

PROJECT OBJECTIVES

- Create an inventory of hydrogeological information accessible to the public.
- Help reduce the costs of environmental investigations when determining groundwater use(s) at contaminated sites.
- Provide groundwater mapping support for areas that may not warrant drinking water protection due to marginal groundwater resources or the presence of natural confining barriers over deeper groundwater resources.

PROJECT SCOPE OF WORK

- Upload targeted hydrogeological information acquired in contaminated sites reports (borehole logs and hydrogeological conductivity data) for a test area in BC (Lower Mainland) for use by the public in conducting groundwater investigations (to be viewed in IMAP).
- It is impractical to include every borehole log at each site, so one or two BH logs are being chosen that are considered to be the most representative.

EXAMPLE DATABASE ENTRY

Name	Address	Municipality	Site ID	Lat	Long	Date drilled
MW00-7	1201 to 1241 Ri	Vancouver	7127	49.275028	-123.12475	2000-12-14
MW00-7	1201 to 1241 Ri	Vancouver	7127	49.275028	-123.12475	2000-12-14
MW00-7	1201 to 1241 Ri	Vancouver	7127	49.275028	-123.12475	2000-12-14
MW00-7	1201 to 1241 Ri	Vancouver	7127	49.275028	-123.12475	2000-12-14
MW00-7	1201 to 1241 Ri	Vancouver	7127	49.275028	-123.12475	2000-12-14

Total BH depth	TOC elev	Surface elev	Top of scre	Bottom of sc	From unit dept	To unit dept	Unit description	Unit number	Hydraulic K	Depth to wat	Depth to wat
4.6		17.1			0	0.8	sand, silty, brown	1			
4.6		17.1			0.8	1.1	sand (fine), brown	2			
4.6		17.1			1.1	1.5	silt, light brown	3			
4.6		17.1	1.5	3.8	1.5	2.3	sand, silty, brown	4	0.000000386	2	
4.6		17.1			2.3	4.6	sand (fine), grey	5			

-PDF attachments of the Borehole Logs will also be linked to the database entries.

FINAL PRODUCT

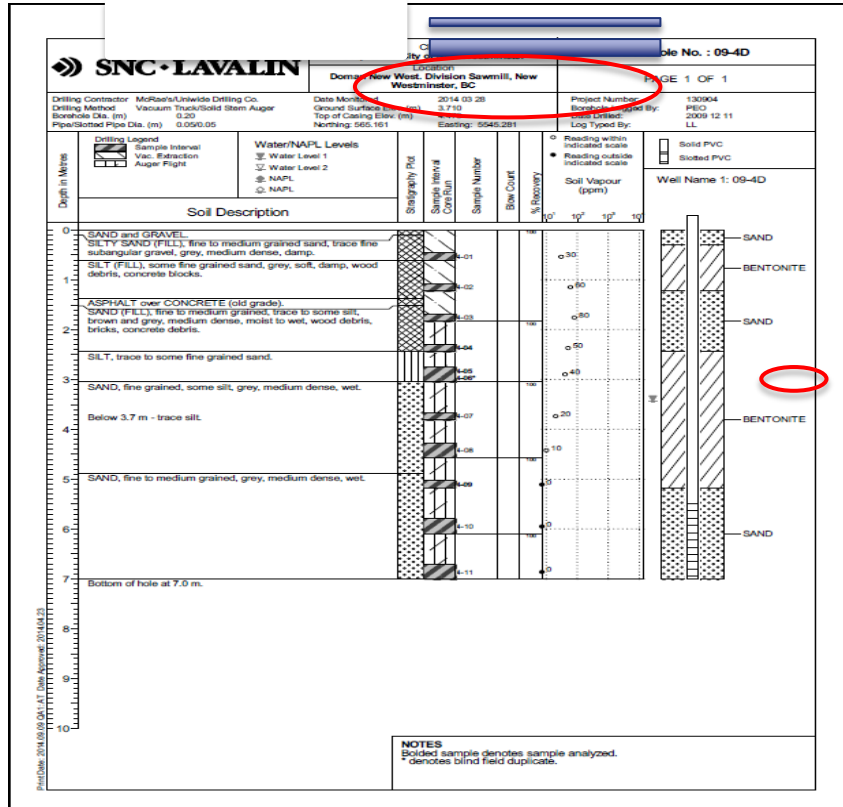


- Each point will contain several layers, corresponding to the number of units.
- Point will contain all the information from the previous slide.

CURRENT PROJECT FOCUS

- Starting with sites in the Lower Mainland (particularly Vancouver)
- This area is where we get the most requests for a director's determination of water use.
- Eventually the project will attempt to include all sites in BC that contain borehole Logs.

EXAMPLE OF A DETAILED BH LOG



- Older, less detailed logs commonly exclude:
- elevations (ground and TOC)
 - northing and easting
 - water levels
 - Discourage use of "reference elevation"

FUTURE OF THE PROJECT

- New reports/sites that come in will have one or two representative BH logs added into the database.
- Goal is to increase efficiency in the entry and retrieval of this data.
- Integration with CSAP database?
- Complete BH logs are important for the success of this project.

ANY QUESTIONS?

Russell Prentice
Co-op Contaminated Sites Officer



Ministry of
Environment