



**CERTIFICATE OF COMPLIANCE**  
**(Pursuant to Section 53 of the *Environmental Management Act*)**

**THIS IS TO CERTIFY** that as of the date indicated below, the site identified in Schedule A of this Certificate of Compliance has been satisfactorily remediated to meet the applicable Contaminated Sites Regulation remediation standards and criteria.

This Certificate of Compliance is qualified by the requirements and conditions specified in Schedule B.

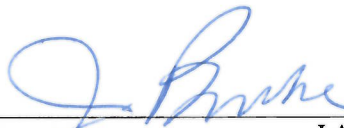
The substances for which remediation has been satisfactorily completed and for which this Certificate of Compliance is valid are listed in Schedule C.

I have issued this Certificate of Compliance based on a review of relevant information including the documents listed in Schedule D. I, however, make no representation or warranty as to the accuracy or completeness of that information.

A Director may rescind this Certificate of Compliance if requirements and conditions imposed in the Certificate of Compliance are not complied with or any fees payable under Part 4 of the Act or regulations are outstanding.

This Certificate of Compliance should not be construed as an assurance that there are no hazards present at the site.

September 25, 2017  
Date Issued

  
\_\_\_\_\_  
J.A. Brooke  
For Director, *Environmental Management Act*

## Schedule A

The site covered by this Certificate of Compliance is located at 1655 Dilworth Drive, Kelowna, British Columbia which is more particularly known and described as:

Portion of Lot B, District Lots 127 and 531, Osoyoos Division, Yale District Plan 25469  
PID: 005-458-935

Described as:

Lot B

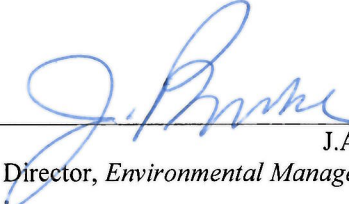
COMMENCING at the south west corner of Lot A, Plan 28500  
THENCE along the bearing N 88d14'28" W a distance of 177.562m;  
THENCE along the bearing N 83d44'32" W a distance of 2.870m;  
THENCE along the bearing N 74d44'31" W a distance of 2.870m;  
THENCE along the bearing N 65d44'31" W a distance of 2.870m;  
THENCE along the bearing N 56d44'27" W a distance of 2.870m;  
THENCE along the bearing N 47d44'34" W a distance of 2.870m;  
THENCE along the bearing N 38d44'25" W a distance of 2.870m;  
THENCE along the bearing N 29d44'37" W a distance of 2.870m;  
THENCE along the bearing N 20d44'31" W a distance of 2.870m;  
THENCE along the bearing N 11d44'32" W a distance of 2.870m;  
THENCE along the bearing N 2d44'32" W a distance of 2.870m;  
THENCE along the bearing N 1d41'59" E a distance of 64.633m;  
THENCE along the bearing N 88d10'23" W a distance of 196.053m;  
THENCE along the bearing S 1d46'55" W a distance of 35.509m;  
THENCE along the bearing S 1d54'25" W a distance of 47.179m  
to THE POINT OF BEGINNING

The site contains part of a legal parcel depicted in an engineering drawing prepared by Hemmera Envirochem Inc. on August 14, 2017.

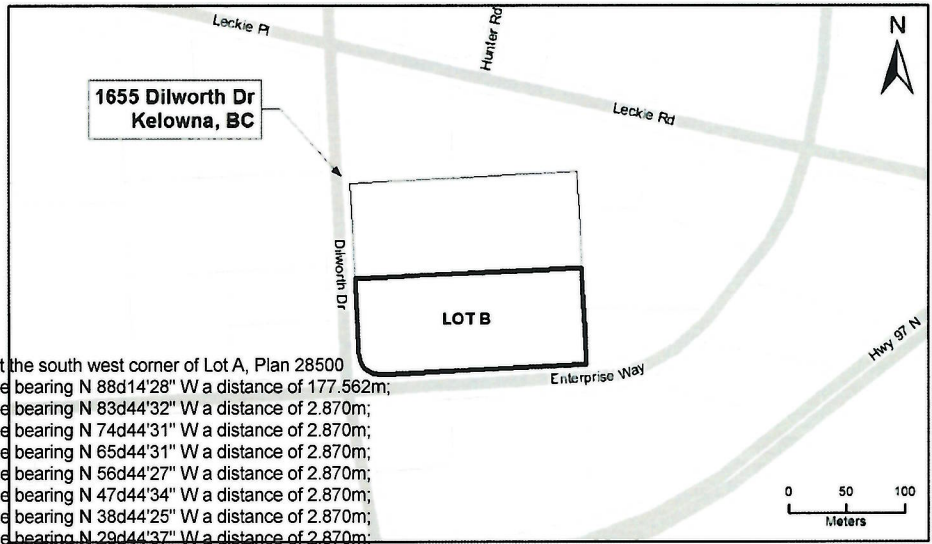
The approximate centre of the site using the NAD (North American Datum) 1983 convention is:

Latitude: 49° 53' 1.60"  
Longitude: 119° 26' 10.00"

September 25, 2017  
Date Issued

  
J.A. Brooke  
For Director, *Environmental Management Act*

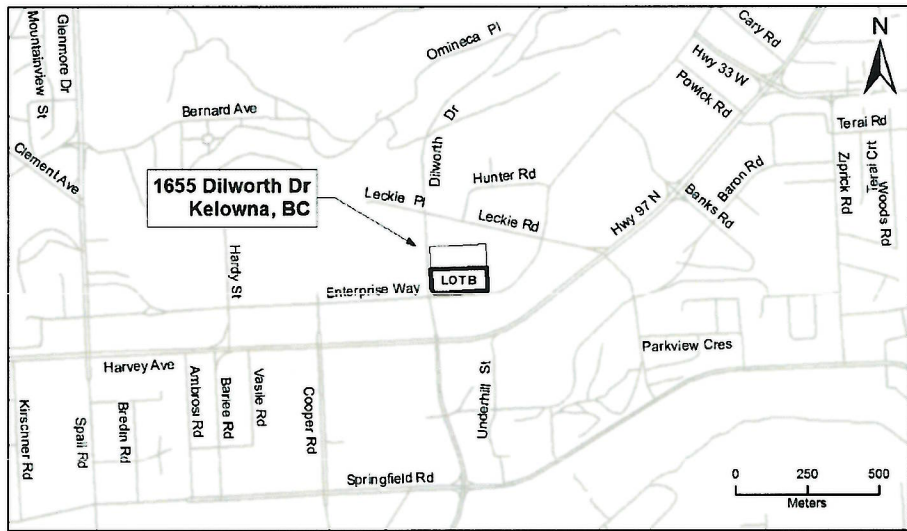
### Site Plan



Lot B  
 COMMENCING at the south west corner of Lot A, Plan 28500  
 THENCE along the bearing N 88d14'28" W a distance of 177.562m;  
 THENCE along the bearing N 83d44'32" W a distance of 2.870m;  
 THENCE along the bearing N 74d44'31" W a distance of 2.870m;  
 THENCE along the bearing N 65d44'31" W a distance of 2.870m;  
 THENCE along the bearing N 56d44'27" W a distance of 2.870m;  
 THENCE along the bearing N 47d44'34" W a distance of 2.870m;  
 THENCE along the bearing N 38d44'25" W a distance of 2.870m;  
 THENCE along the bearing N 29d44'37" W a distance of 2.870m;  
 THENCE along the bearing N 20d44'31" W a distance of 2.870m;  
 THENCE along the bearing N 11d44'32" W a distance of 2.870m;  
 THENCE along the bearing N 2d44'32" W a distance of 2.870m;  
 THENCE along the bearing N 1d41'59" E a distance of 64.633m;  
 THENCE along the bearing N 88d10'23" W a distance of 196.053m;  
 THENCE along the bearing S 1d46'55" W a distance of 35.509m;  
 THENCE along the bearing S 1d54'25" W a distance of 47.179m  
 to THE POINT OF BEGINNING

Site Plan


### Location Map



Site Location

September 25, 2017

Date Issued

  
 J.A. Brooke  
 For Director, Environmental Management Act

## Schedule B

### Requirements and Conditions

1. Any changes in land, vapour, or water uses must be promptly identified by the responsible person in a written submission to the Director. An application for an amendment or new Certificate of Compliance may be necessary. The use to which this condition applies are described in Schedule C and in the site investigation documents listed in Schedule D.

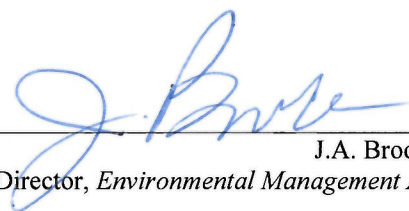
The documents listed in Schedule D indicate that vapour attenuation factors were applied to meet a Contaminated Sites Regulation numerical standard at the site. These vapour attenuation factors were selected based on assumptions about the structures, locations and depths of buildings existing or expected at the site. These assumptions include the following:

- (a) Any buildings on the site must be constructed with a concrete floor slab located at or above the site grade that existed on August 9, 2017; and
- (b) No groundwater contact with the concrete floor slab will occur.

Any inconsistencies that arise between the structures, locations and depths of proposed or constructed buildings at the site and the range of structures, locations and depths of buildings assumed in the selection of vapour attenuation factors in the documents listed in Schedule D must be promptly identified by the responsible person(s) in a written submission to the Director. An application for an amendment or new Certificate of Compliance may be necessary.

September 25, 2017

Date Issued



J.A. Brooke

For Director, *Environmental Management Act*

## Schedule C

### Substances and Uses

*Substances remediated in soil for commercial land soil use:*

To meet numerical remediation standards:

- LEPHs, HEPHs.

September 25, 2017

Date Issued



J.A. Brooke

For Director, *Environmental Management Act*


## Schedule D

### Documents

- *Summary of Site Condition*, prepared by Hemmera Envirochem Inc., dated August 2017;
- *Stage 1 & 2 Preliminary Site Investigation, Detailed Site Investigation and Confirmation of Remediation, 1655 Dilworth Drive, Kelowna, BC*, prepared by Hemmera Envirochem Inc., dated August 2017;
- *Confirmation of Independent Remediation and Groundwater Assessment at 1655 Dilworth Drive, Kelowna, BC*, prepared by Summit Environmental Consultants Inc., dated August 2015; and
- *Phase I&II Environmental Site Assessment at 1655 Dilworth Drive, Kelowna, BC*, prepared by Summit Environmental Consultants Inc., dated April 2013.

September 25, 2017

Date Issued

  
\_\_\_\_\_  
J.A. Brooke  
For Director, *Environmental Management Act*