

INTERIM PROCESS FOR MANAGING HAZARDOUS WASTE ON CONTAMINATED SITES

Peggy Evans
Land Remediation Section
Environmental Protection Division

Contaminated Sites Approved
Professionals Society Workshop
October 28, 2015



Ministry of
Environment

HAZARDOUS WASTE TRANSITION STRATEGY

Short Term:

- Interim Process

Long Term:

- Amend def'n of Contaminated Site in EMA to remove reference to hazardous waste
- Amend the HWR and CSR (delink them)
- Historical wastes in soil and groundwater that are currently classified as hazardous waste and are to be managed on the site of origin will be managed under the requirements of the Contaminated Sites Regulation only.

TEAM

Christina Sinnemann - Lead

Kelli Larsen

Ana Tsui

Rob Dalrymple

Peter Kickham



**BRITISH
COLUMBIA**



THE HAZARDOUS WASTE REGULATION AND THE CONTAMINATED SITES REGULATION VIS-À-VIS CONTAMINATED SITE REMEDIATION ACTIVITIES

A Presentation to the:

Contaminated Sites Approved Professionals Society

November 20, 2013

Vancouver, BC

by

**Peggy Evans & Rob Dalrymple
Environmental Protection Division
BC Ministry of Environment**



Ministry of
Environment

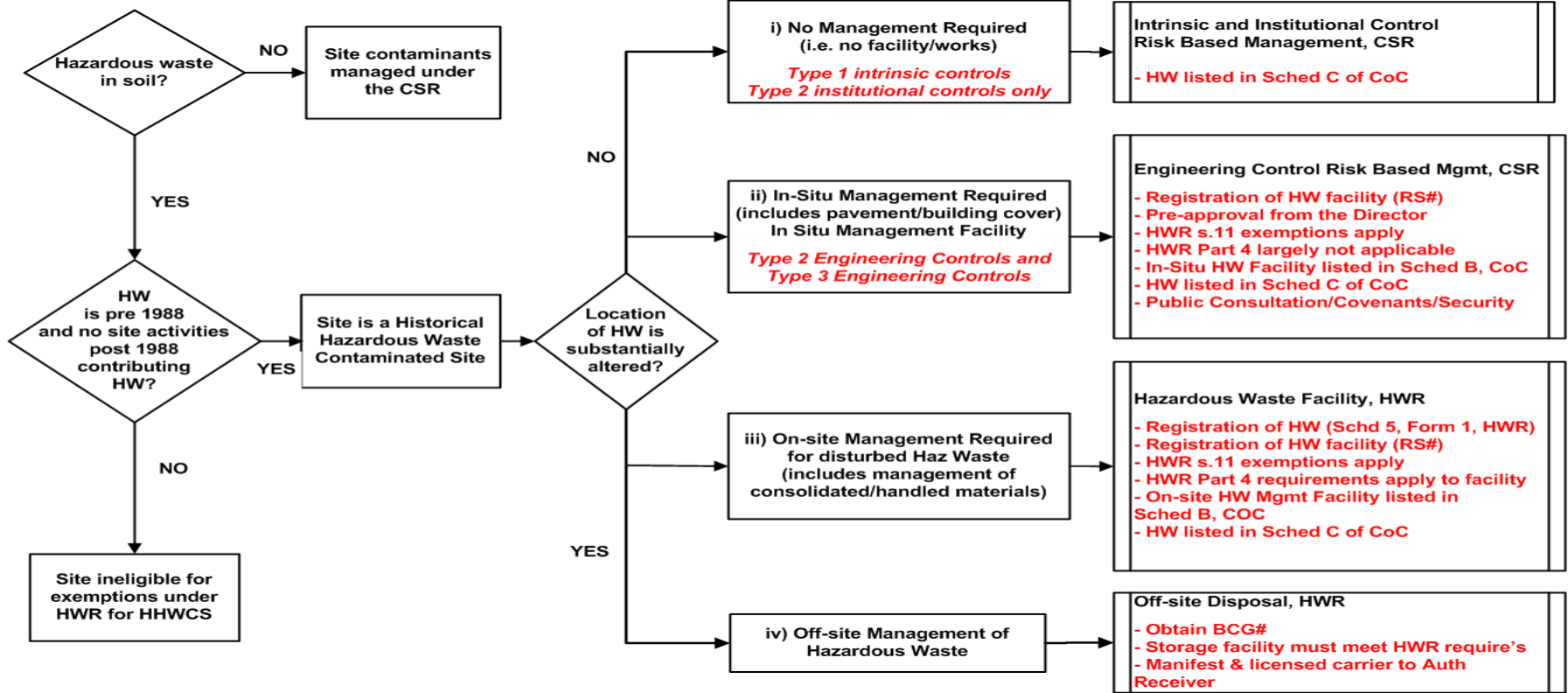
CURRENT ISSUES

- Lack of understanding of applicability of HWR to contaminated sites
- Lack of appropriate testing of soils to identify hazardous waste
- Confusion around whether and what “facility” applies?
- For in-situ facilities, lack of clarity around preapproval requirements under S. 2(11)(c)
- Difficulty in reconciling applicable HWR requirements to contaminated sites

OBJECTIVE OF INTERIM PROCESS

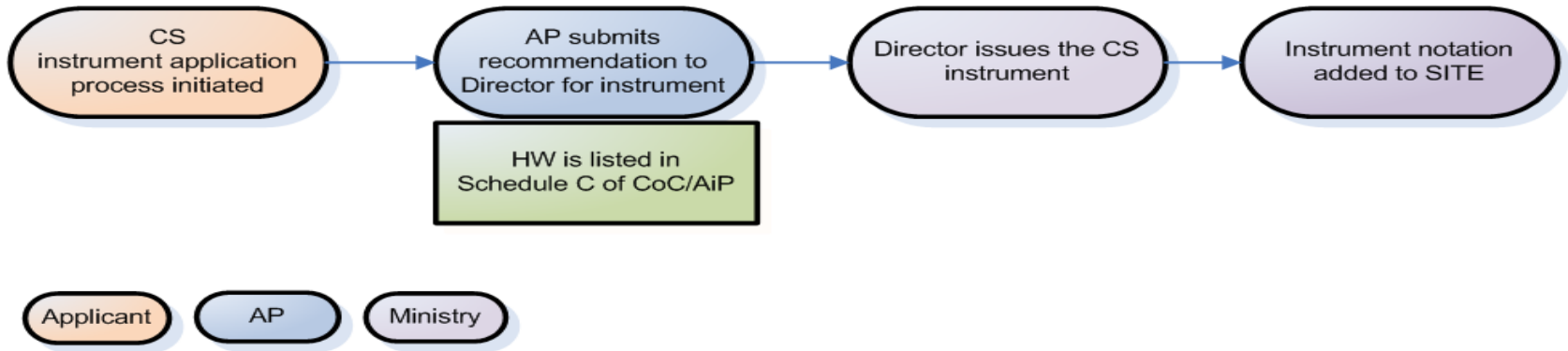
To ensure contaminated sites are tested for the presence of hazardous waste and that, where hazardous waste is to be managed in-situ under risk-based management, there is a clear process for site owners to comply with the HWR by meeting the requirements of the CSR where possible.

INTERIM PROCESS



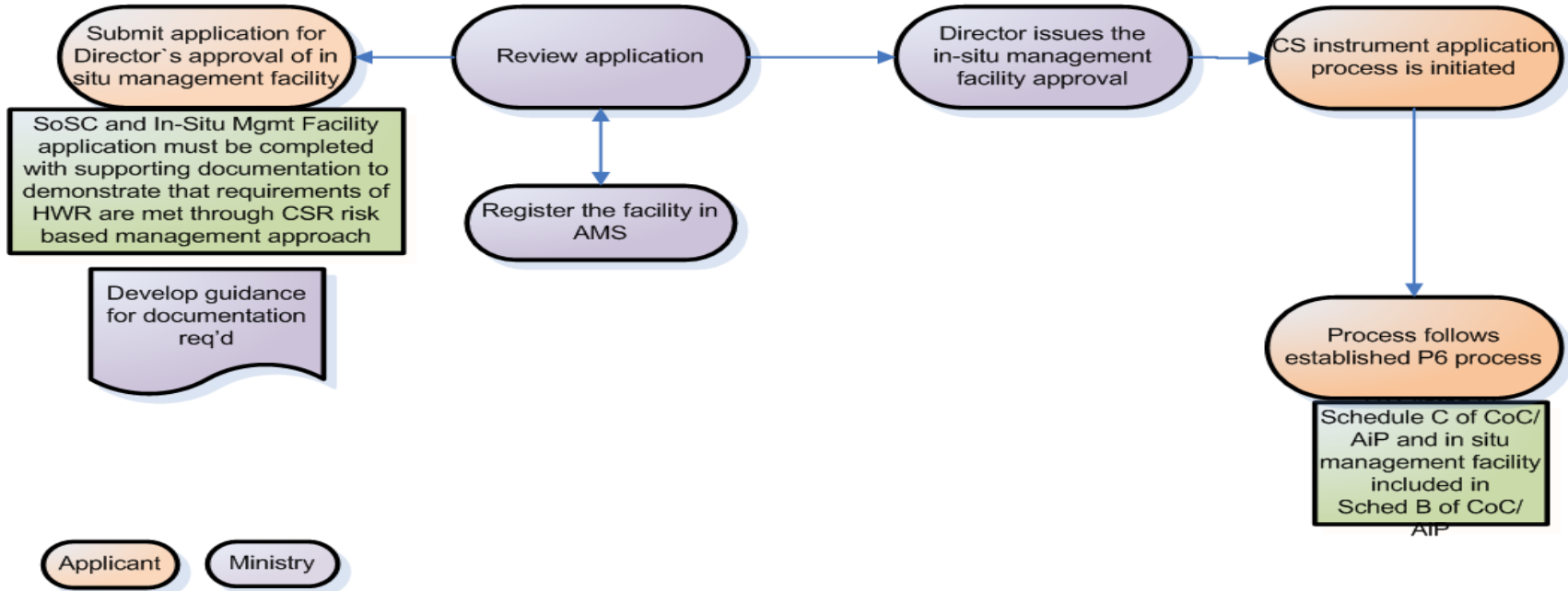
PROCESS FOR SITES WITH NO FACILITY OR WORKS

Type 1 intrinsic controls and Type 2 institutional controls only



PROCESS FOR SITES WITH IN SITU MANAGEMENT FACILITY

Type 2 and Type 3 engineering controls



NEXT STEPS

- **Develop guidance for in-situ management facility applications**
- **Identify conditions for streamlined “preapproval by rule” (e.g. ‘simple’ engineering controls used in common applications)**
- **Determine role, if any, for AP in preapproval process**

Thank you

E-mail: Peggy.Evans@gov.bc.ca

Tel: (250) 356-8386



Ministry of
Environment