



Ministry of  
Environment

**PRELIMINARY DETERMINATION**  
(Pursuant to Section 44 of the *Environmental Management Act*)

I have made a Preliminary Determination that the site identified in Schedule A of this document is not a contaminated site.

This Preliminary Determination is qualified by the requirements and conditions specified in Schedule B.

The site does not have concentrations of the substances specified in Schedule C that exceed the applicable standards and criteria prescribed in the Contaminated Sites Regulation for determining whether a site is a contaminated site.

I have issued this Preliminary Determination based on a review of relevant information including the documents listed in Schedule D. I, however, make no representation or warranty as to the accuracy or completeness of that information.

This is to advise that I will consider submissions received 35 days after delivery of this Preliminary Determination before a Final Determination is made.

In accordance with the *Environmental Management Act*, I will notify persons with an interest in the subject site once a Final Determination is made.

This Preliminary Determination should not be construed as an assurance that there are no hazards present at the site.

May 13/14  
Date Issued

John E. H. Ward  
John E. H. Ward  
For Director, *Environmental Management Act*

**Schedule A**

The site covered by this Preliminary Determination is located at 13655 – 256<sup>th</sup> Street, Maple Ridge, British Columbia, which is more particularly known and described as:

(Portion of) Part NE ¼ , District Lot 5326, Group 1, New Westminster Land District, Except:  
Firstly: Part Subdivided by Plan 77454, and Secondly: Part subdivided by Plan 85044 and  
Thirdly: Part subdivided by Plan LMP13975

The Site is the portion bounded within the points defined by the following coordinates:

- Point 1 Lat 49.251884° Long 122.516789°
- Point 2 Lat 49.251235° Long 122.517115°
- Point 3 Lat 49.251632° Long 122.518462°
- Point 4 Lat 49.252089° Long 122.518379°
- Point 5 Lat 49.252139° Long 122.518034°

PID: (Portion of) 000-947-261

The Site contains part of a legal parcel depicted in a an engineering drawing prepared by Gary Letts, AScT on March 3, 2014, which is presented in the Site Plan

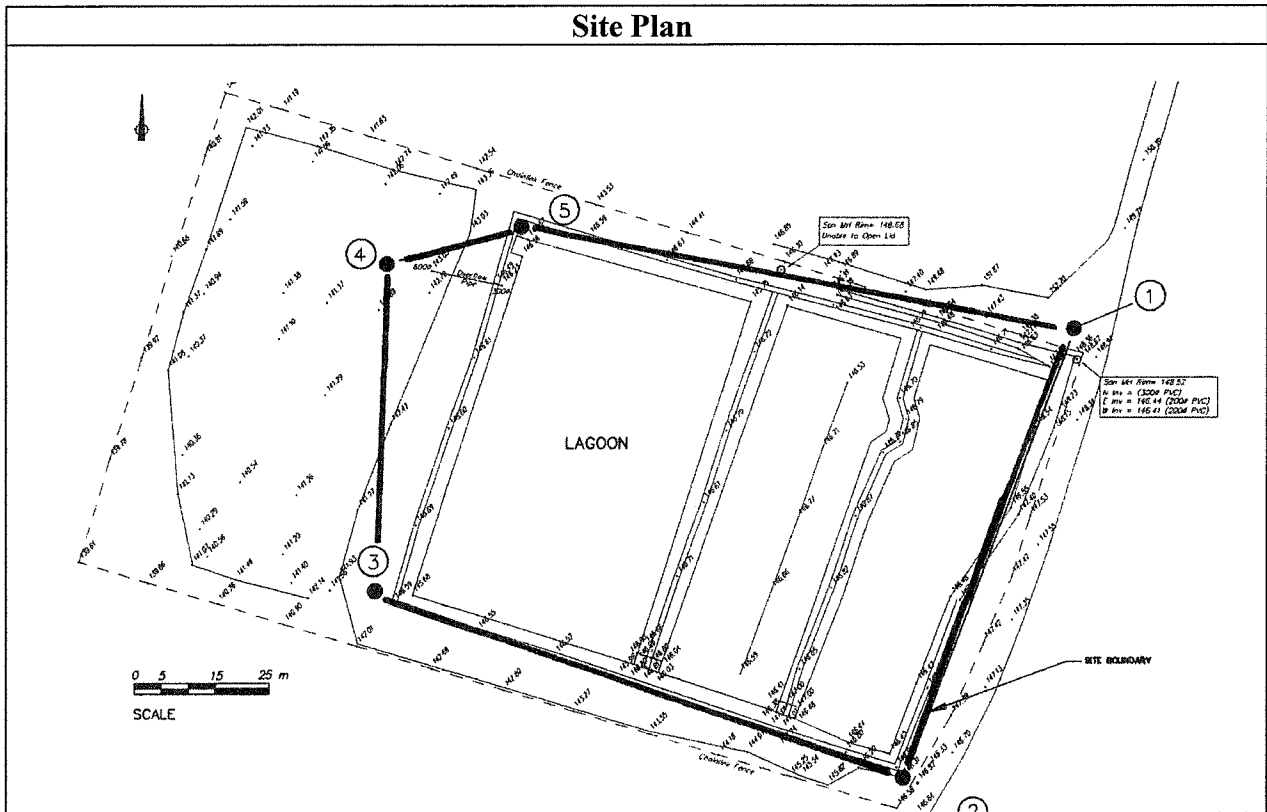
The approximate center of the site using the NAD (North American Datum) 1983 convention is:

Latitude: 49° 15' 6.08"  
Longitude: 122° 31' 3.25"

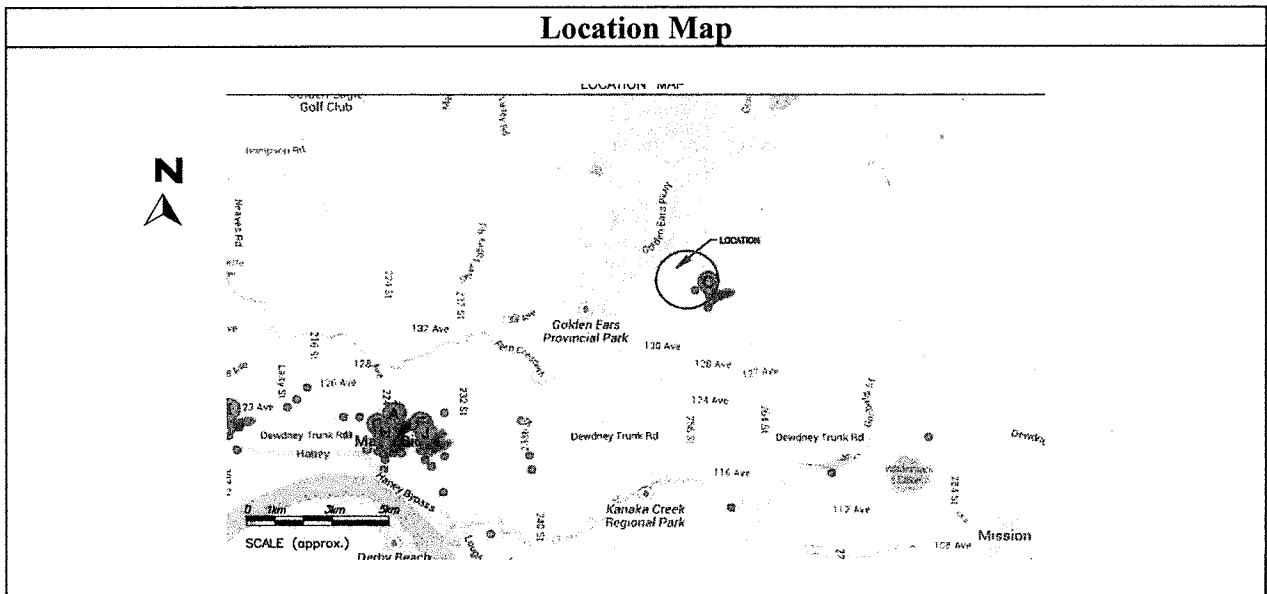
May 13/14  
Date Issued

  
John E. H. Ward  
For Director, *Environmental Management Act*

### Site Plan



### Location Map



*May 13/14*

Date Issued

Site Identification Number 9459  
Version 8.0 R

*John E. H. Ward*

John E. H. Ward  
For Director, *Environmental Management Act*

**Schedule B**

**Requirements and Conditions**

This Schedule contains no requirements or conditions.

May 13/14  
Date Issued

Site Identification Number 9459  
Version 8.0 R

John E. H. Ward  
John E. H. Ward  
For Director, *Environmental Management Act*  
4 of 7

## Schedule C

### Substances and Uses

#### *Substances evaluated in soil for agricultural land soil use:*

To meet numerical standards prescribed for defining whether a site is contaminated:

- Benzene, ethylbenzene, toluene and xylene;
- LEPHs and HEPHs;
- Antimony, arsenic, barium, beryllium, cadmium, chromium, cobalt, copper, lead, mercury, molybdenum, nickel, selenium, silver, thallium, tin, uranium, vanadium and zinc;
- Benz[a]anthracene, benzo[b]fluoranthene, benzo[k]fluoranthene, benzo[a]pyrene, indeno [1,2,3-cd] pyrene, dibenz[a,h]anthracene, naphthalene, phenanthrene and pyrene; and
- Bromodichloromethane, bromoform, carbon tetrachloride, chlorobenzene, chloroethane, chloroform, chloromethane, , 1,2-dichlorobenzene, 1,3-dichlorobenzene, 1,4-dichlorobenzene, 1,1-dichloroethane, 1,1-dichloroethene, cis-1,2-dichloroethene, trans-1,2-dichloroethene, 1,2-dichloropropylene, cis-1,3-dichloropropene, trans-1,3-dichloropropene, 4-methyl-2-pentanone, methylene chloride, MTBE, 1,1,1,2-tetrachloroethane, 1,1,2,2-tetrachloroethane tetrachloroethene, 1,1,1,2-trichloroethane, 1,1,2,2-trichloroethane, trichloroethene, trichlorofluoromethane and vinyl chloride.

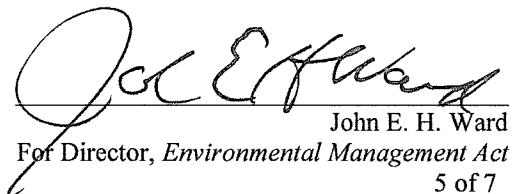
#### *Substances evaluated in water for aquatic water fresh and drinking water uses:*

To meet numerical standards prescribed for defining whether a site is contaminated:

- Benzene, ethylbenzene, styrene, toluene and xylenes;
- LEPHw and LEPHw;
- Aluminum, antimony, arsenic, barium, beryllium, boron, cadmium, chromium, cobalt, copper, iron, lead, lithium, magnesium, manganese, mercury, molybdenum, nickel, selenium, silver, sodium, thallium, tin, titanium, uranium and zinc;
- Acenaphthene, acridine, anthracene, benzo[a]anthracene, benzo[a]pyrene, chrysene, fluoranthene, fluorene, naphthalene, phenanthrene, pyrene and quinoline; and
- Bromodichloromethane, bromoform, carbon tetrachloride, chloroform,

May 13/14  
Date Issued

Site Identification Number 9459  
Version 8.0 R

  
John E. H. Ward  
For Director, *Environmental Management Act*  
5 of 7

dibromochloromethane, chloroethane, 1,2-dichlorobenzene, 1,3-dichlorobenzene, 1,4-dichlorobenzene, 1,1-dichloroethane, 1,2-dichloroethane, 1,1-dichloroethene, cis-1,2-dichloroethene, trans-1,2-dichloroethene, dichloromethane, 1,2-dichloropropane, 1,3-dichloropropene, MTBE, 1,1,1,2-tetrachloroethane, 1,1,2,2-tetrachloroethane, 1,1,1-tetrachloroethane, 1,1,2-trichloroethane, trichloroethylene, trichlorofluoromethane and vinyl chloride.

May 13/14  
Date Issued

Site Identification Number 9459  
Version 8.0 R

John E. H. Ward  
John E. H. Ward  
For Director, *Environmental Management Act*  
6 of 7

## Schedule D

### Documents

*Summary of Site Condition, FRCC Lagoon, Maple Ridge, BC.* Prepared by S Graham, S. Graham Engineering and Geology Inc., March 3, 2014;

*Stage 2 Preliminary Site Investigation and Detailed Site Investigation, Fraser Regional Correction Centre Sewage Lagoon Decommissioning at 13655 – 256th Street, Maple Ridge, BC,* Prepared by S. Graham, S Graham Engineering and Geology Inc., December 2, 2013; and

*Stage 1 Preliminary Site Investigation, Fraser Regional Correction Centre, Sewage Lagoon at 13655 – 256th Street, Maple Ridge, BC.* Prepared by L. Oswald and N. Shah, Levelton Consultants Ltd., November 19, 2013.

May 13/14  
Date Issued

Site Identification Number 9459  
Version 8.0 R

John E. H. Ward  
John E. H. Ward  
For Director, *Environmental Management Act*  
7 of 7